



KS Engineers, P.C.
Engineers . Surveyors
Construction Managers

New Jersey
New York
Pennsylvania
Connecticut

info@kseng.com
www.kseng.com

INSPECTION OF QUEENS MIDTOWN TUNNEL

New York City, New York

New York, NY

PROJECT NAME

In-depth inspection of Queens Midtown Tunnel, Vent Buildings, Queens and Manhattan Plazas, and High Mast light towers.

PROJECT OWNER

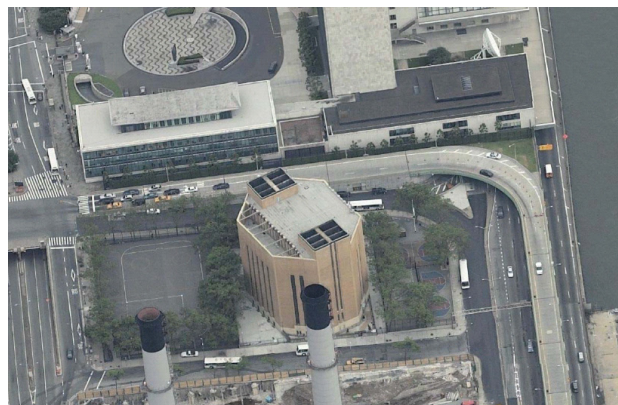
Metropolitan Transportation Authority (MTA) – Bridges and Tunnels

PROJECT DESCRIPTION

The scope of this project was a complete hands-on inspection to cover all areas within property lines of this major MTA infrastructure facility. The work included documenting possible defects, violations, hazards and other deficiencies to ensure safe and orderly operation of the tunnel and its immediate auxiliary structures. The condition of facilities inspected was documented and defined in a detailed inspection report submitted to the Authority.

The Queens Midtown Tunnel (QMT) is a twin tube (North and South) sub-aqueous vehicular tunnel under the East River connecting Manhattan to Long Island City in New York City. The North and South tubes are 6414 feet and 6271 feet respectively between portals. The tunnel has a maximum vertical clearance of 13'-6" and a roadway with in each tube of 21'-0" between curbs that increases to 23'-6" on curves. Other major components and auxiliary structures of the QMT include: Manhattan Ventilation Building; Manhattan Plazas and adjacent roadways with structures; Queens Ventilation Building; Queens Plaza and adjacent roadways with structures; Adjacent roadways, sidewalks, retaining walls, fences and similar auxiliary features located within property limits boundary.

KSE will accessed and rated the condition of the defined structures, elements, areas and systems of the Facility in order to sustain safe and uninterrupted Facility operation and to prepare a comprehensive inspection report and executive summary for the Authority's evaluation.



KS Engineers, P.C.