



KS Engineers, P.C.
Engineers . Surveyors
Construction Managers

New Jersey
New York
Pennsylvania
Connecticut

info@kseng.com
www.kseng.com

Design of Thurgood Marshall Elementary School Renovation & Addition

Asbury Park, NJ

PROJECT NAME

Design Services for the Renovation and Addition to the Thurgood Marshall Elementary School in Asbury Park, NJ

PROJECT OWNER

NJ Schools Construction Corporation

SERVICES PROVIDED

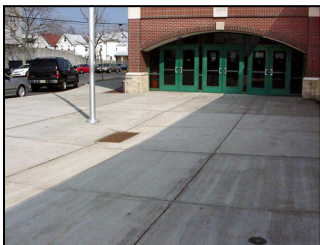
- Site / Civil Engineering
- New Sight Lighting Design
- Geotechnical Engineering
- Topographic, Utilities and Boundary Survey

PROJECT DESCRIPTION

KS Engineers, P.C. (**KSE**) was responsible for the design and contract document preparation for all Site/Civil and Geotechnical components for the reconfiguration, renovation of and addition to the Thurgood Marshall Elementary School and related site improvements in the City of Asbury Park. The project involved construction of a building addition of approximately 75,000 SF and alteration of approximately 13,000 SF of the existing school. The project were undertaken in a three-phase process: Sub-Phase, Design Phase, and Construction Phase.

Sub-Phase activities focused on performing the required environmental assessments. During this phase, **KSE** provided geotechnical services including a complete subsurface exploration program; utility investigation involving an assessment of the existing municipal utility services to determine if adequate capacity exists to accommodate this addition.

Design Phase services included preparation of contract plans for demolition of a portion of the existing building, on-site grading and drainage, new site lighting and soil erosion and sediment control plans.



KS Engineers, P.C.