



Route 18 Extension, Section 2A ; Construction Inspection

Middlesex County, NJ

KS Engineers, P.C.
Engineers . Surveyors
Construction Managers

New Jersey
New York
Pennsylvania

**CORPORATE
HEADQUARTERS:**

**24 Commerce Street
Newark, NJ 07102
P: 973.623.2999
F: 973.242.2955**

**info@kseng.com
www.kseng.com**

PROJECT NAME

Construction Inspection of Route 18 Extension, Section 2A in Piscataway, NJ

PROJECT OWNER

NJ Dept. of Transportation

SERVICES PROVIDED

Construction Inspection

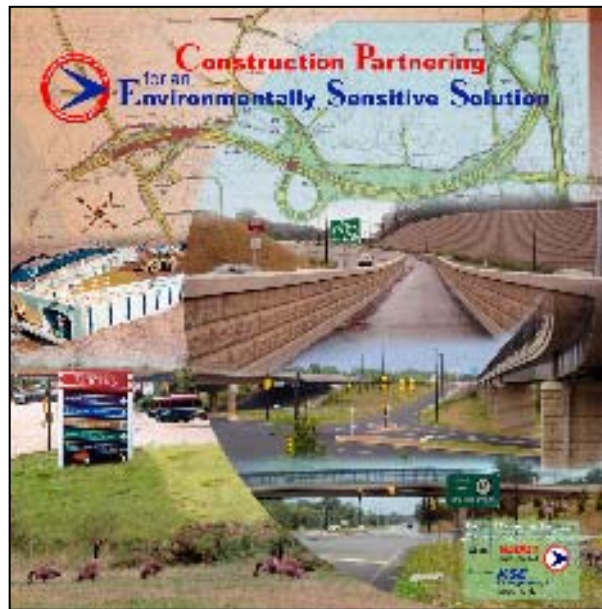
DATE OF SERVICE

2002 - 2006



PROJECT DESCRIPTION

KS Engineers, P.C. (KSE) provided construction inspection services for approximately two miles of a new two-lane divided highway. The Construction of this project was initiated by the New Jersey Department of Transportation (**NJDOT**) in June of 2003. It included the construction of a new two lane, 3,333 meters long divided highway, 6 bridge structures, 6 culverts and architectural surface treatments of all bridge abutments, piers and retaining walls. Also included were over 3,600 meters of multi-use paths for pedestrians and cyclists and the planting of over 100 species of trees, shrubs and flowers to restore 29 hec acres back to its natural habitat for student and faculty enjoyment at the Rutgers campus. The construction cost for the project was over \$75,000,000. The project was constructed in Piscataway, New Jersey within the domains of Rutgers University Busch and Livingston Campuses, which added the requirement for minimizing construction related congestion to the already congested roadways and ensuring the safety of all parties. The project also included replacement of a 96 inch diameter sewer pipe under a new roadway. Trenchless technology was used to install a liner within the existing pipe.



KS Engineers, P.C.