





While our infrastructure matures at a rapid pace, many of our rural and urban bridges, viaducts, and culverts are in need of significant repair or replacement. KSE is performing much needed condition surveys, NBIS, biennial, and structural integrity inspections, load ratings, and fatigue and scour analyses. In addition, we have developed computerized bridge information systems to extend the life of these valuable assets. Our engineers excel in what they do and KSE provides them with the necessary tools and training to make their challenging work exciting and rewarding. In order to save our clients valuable time and money, we constantly adapt to new technologies. Our field professionals use the latest in tablet PCs to produce more efficient, accurate, and consistent inspection field notes, and use wireless broadband Internet access to stay in touch with clients and our main office at a moment's notice. When you close a lane on a major highway or take a track out of service to perform inspection and discover a serious structural flag, the client needs to be notified immediately. Being able to send and receive electronic files and images right from the inspection van has saved our clients thousands of dollars in extra cost. Clients are able to observe the flagged condition while the inspection equipment and MPT are still in place, allowing them to make critical decisions on the spot. Using our Virtual Private Network (VPN) right from the field, our engineers can access a centralized database in the main office to review documents and drawings, necessary for making time-critical decisions. Our services have ranged from the provision of team leaders and full inspection teams to complete project management on minor and major bridges, viaducts, elevated structures, culverts, and sign structures. We have strong credentials as both a prime and subconsultant on infrastructure inspection projects in this challenging region.



*In-Depth Inspection and Structural Load Ratings of over 300 Fixed & 14 Movable Undergrade Railroad Bridges throughout New Jersey - NJ Transit*



*Comprehensive Assessment of Line Structures on the Bay Ridge & Bushwick Branches - MTA Long Island Rail Road*



*Inspection of over 600 Cantilever and Overhead Sign Structures - NJDOT - NYSDOT*



*Bridge Inspection Program, Part B - NJ Turnpike Authority (2001, 2002, 2003, 2005, 2006)*



*In-Depth Inspection of Bridges and Viaducts carrying Staten Island Rapid Transit - MTA / NYC Transit*



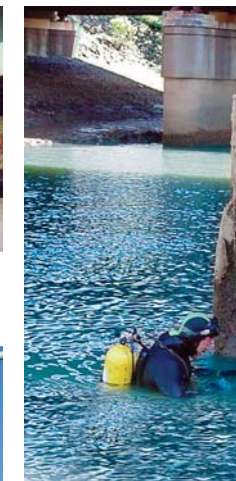
*US Route 1 NB Bridge Over Raritan River, NJ  
NBIS Inspection of over 1000 Simple & Complex Vehicular Bridges throughout New Jersey - NJDOT*



*Biennial Inspection and Design of Miscellaneous Structural Repairs at the Marine Parkway & Cross Bay Bridges - MTA Bridges & Tunnels*



*2005 Systemwide NBIS Substructure Inspection - Delaware River Joint Toll Bridge Commission*



*Underwater Inspection of bridge Substructure units - NJTA - NYSDOT - NJDOT - NJ Transit - DRJTBC*



*In-Depth Inspection & Deck Condition Assessment of the Walt Whitman Bridge Suspension and Anchorage Spans - Delaware River Port Authority*

- Vehicular Bridges
- Undergrade Railroad Bridges
- Pedestrian Bridges
- Long Span & Suspension Bridges
- Complex & Major Bridges
- Movable Bridges
- Trestles & Viaducts
- Piers & Bulkheads
- Sign Structures
- High-Mast Light Towers
- Traffic-Signal and Light Poles



*Biennial Inspection of Local & Arterial bridges in NY City & Upstate Regions - NYSDOT*



*NBIS Inspection of over 300 Garden State Parkway Bridges - NJ Turnpike Authority*